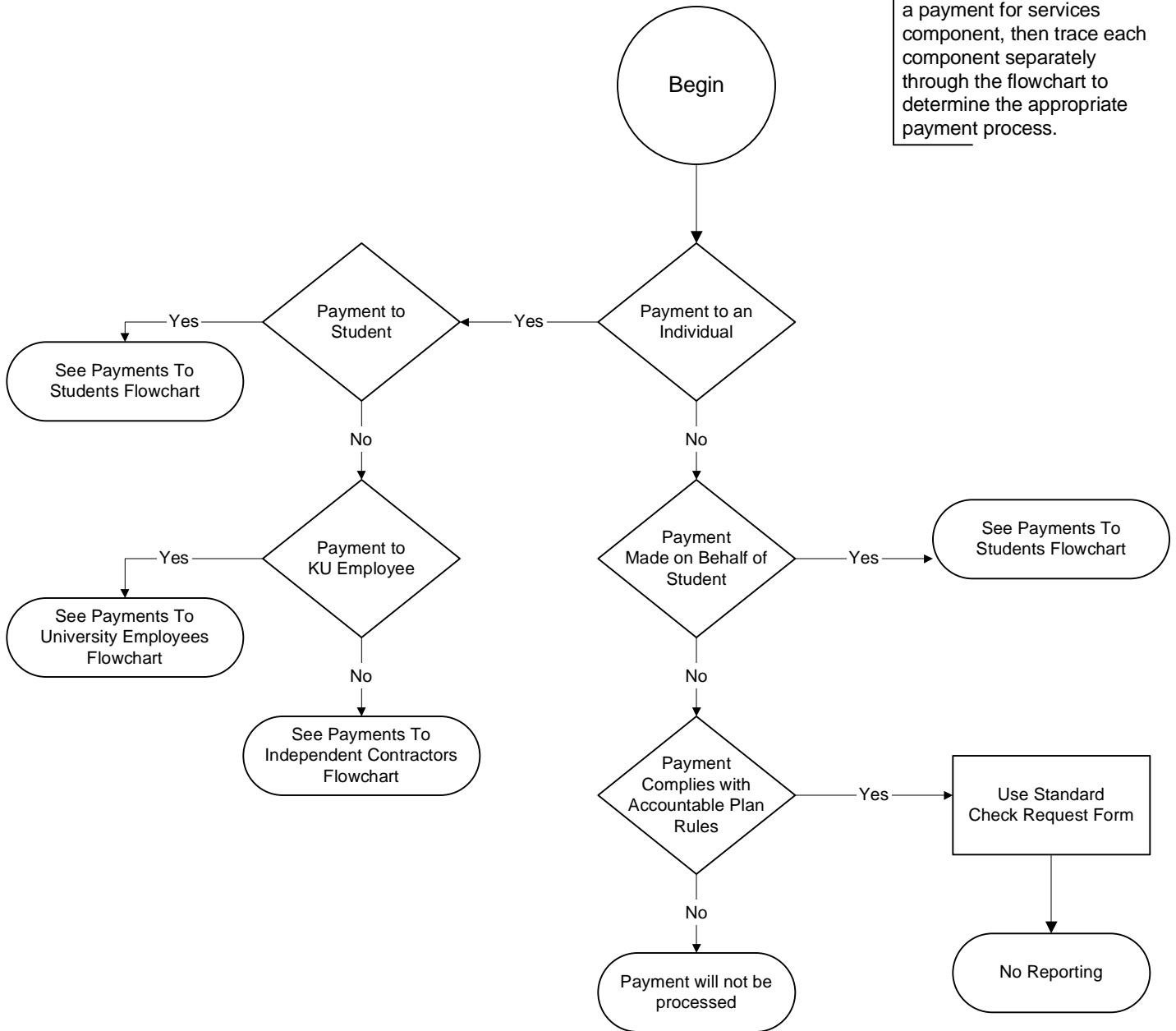


# Overview of Payment Process

When one payment has both an expense component and a payment for services component, then trace each component separately through the flowchart to determine the appropriate payment process.



A payment must meet the following criteria in order to comply with the accountable plan rules: (1) payment is supported with sufficient receipt documentation; (2) expense is for a valid business purpose; (3) expense is accounted for on a timely basis